

# Quick Start Guide

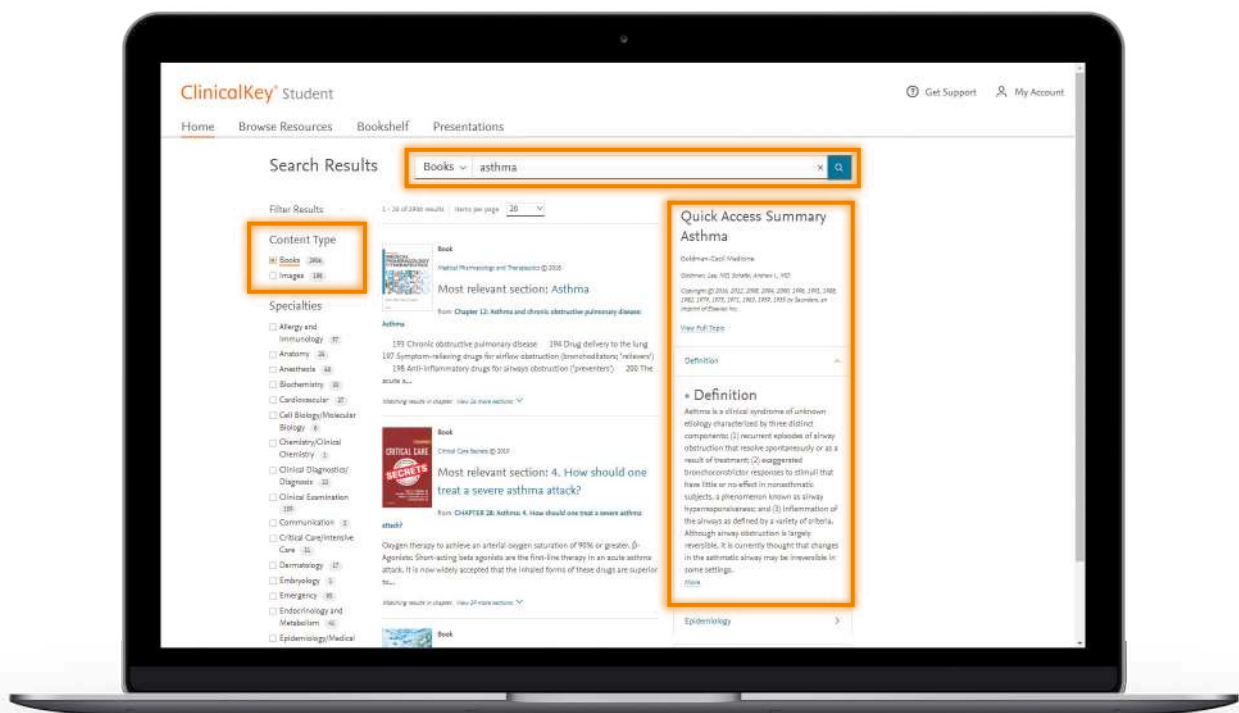
ClinicalKey Student is an interactive education platform that supports students and faculty with comprehensive learning tools and trusted medical content.

## 1 Create your account

- Go to [www.clinicalkey.com/student](http://www.clinicalkey.com/student) from within your institution's network
- If you have an account with another Elsevier product (e.g. ClinicalKey, ScienceDirect, Scopus), you can use these credentials to log in to ClinicalKey Student
- No Elsevier profile? Click Register in the upper right-hand corner of the screen and create your personal profile

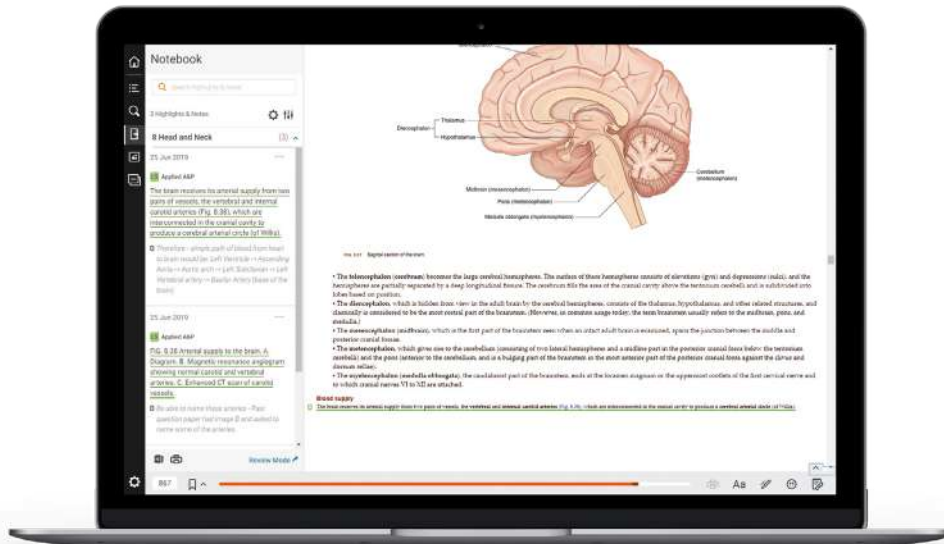
## 2 Dive right in...

- Search for an anatomical structure or medical condition
- Filter by type to view related book, image and video content
- Narrow search results by specialty to identify relevant content
- Deep dive into a quick access summary to quickly get to grips with key medical conditions




# 3 Build your own bookshelf

- Add a book to Bookshelf by clicking on "Launch Bookshelf" from inside a chapter of a book
- Make notes and highlight important information inside text
- Share your notes with other students
- Build your own flashcards to quiz yourself on key concepts and review later



# 4 Learn on the go

- Download the ClinicalKey Student Bookshelf app from within your institution's network, available on iOS and Android
- Test out the read aloud function by selecting a chapter within a book and selecting 

*Tip: Make sure to add books to Bookshelf before downloading the ClinicalKey Student Bookshelf app*

